



## **AECB-3**

## **AEC "Banquette with Vertical Channel Tufted Back"**

Manufacturer: AEC, Inc. 14202 Proton Rd. Dallas, TX 75244

Product Name: AEC Banquette Standard (AECB-1)

### **ACTION SUBMITTALS**

- A. Shop Drawings: Show location of banquettes, attachment to other work and other components. Include dimensioned plans, elevations, sections, details & seam layouts.
  - 1. Show details half size; show sections at 3" = 1'-0" minimum; show plans and elevations at 1/2" = 1'-0" minimum.
  - 2. Show locations and sizes of furring and blocking, including concealed blocking specified in other sections.
- B. Samples for Verification:
  - 1. Seat upholstery fabric, in 12 inch (610-mm) square samples.
  - 2. Back upholstery fabric, in 12 inch (610-mm) square samples.
  - 3. Plastic Laminate, in 3 inch (150-mm) square samples.

### **CLOSEOUT SUBMITTALS**

- A. Maintenance Instructions: Submit two copies, covering cleaning procedures, adjustments, flexibility and use for fabric.
  - 1. Instructions shall contain manufactures recommended cleaning materials and application methods, including precautions in use of cleaning materials which may be detrimental.

### **DELIVERY, STORAGE & HANDLING**

- A. Wrap or crate prefabricated materials to prevent damage during shipping and installation.
- B. Do not deliver banquettes until painting and similar operations that could damage banquettes have been completed in installation areas.



## FIELD CONDITIONS

- A. Environmental Limitations: Do not deliver or install banquettes until building is enclosed, wet work is complete and HVAC system is operation and will maintain temperature and relative humidity at occupancy levels during the remainder of the construction period.
- B. Field Measurements: Where banquettes are indicated to fit to other construction, verify dimensions of other construction by field measurements before fabrication and indicate measurements on shop drawings/ Coordinate fabrication schedule with construction progress to avoid delaying the work.
  - 1. Locate concealed framing, blocking and reinforcements that support banquettes by field measurements before being enclosed and indicate measurements on shop drawings.

## CONFIGURATION

- A. Inside Back Style: **[Plain Upholstered] [Diamond tufted] [Horizontal channels] [Biscuit tufted] [Vertical channels].**
- B. End Panel Style: **[Wrap around upholstered] [Self upholstered with single stitch] [Applied upholstered end panel with welt] Applied ¾" self-edge plastic laminate or wood veneer end panel].**
- C. Seat Style: **[Box Style] [Smooth rolled over front edge with single or double stitch on ends] [Fully upholstered seat with over and down front edge with single or double stitch on ends] [Plain upholstered with single or double stitch on all seat top edges] [Plain upholstered with French, single or double stitch] [Waterfall front edge with single or double stitch or welt on ends].**
- D. Seat Apron Style: **[Recessed] [Flush] [No Seat Apron].**
- E. Kick base Style: **[Enclosed kick base with square corners and square profiles] [Enclosed kick base with radius corners] [Metal or wooden post legs].**
- F. Outside Back Style: **[Unfinished] [Plain upholstered with welt] [ Applied ¾" thick self-edge plastic laminate or wood veneer back with welt].**

## FABRICATION

- A. Overall Height: Manufacturers standard (36-42")
- B. Overall Depth: Manufacturers standard. [24-26"].
- C. Overall Width: **[Varies by design]**
- D. Seat Back: 6" wide vertical tufted back, 18 inches H x 3 inches thickness
- E. Seat: 18 inches (457-mm) D x 3 inches thickness
- F. Base Height: 4 inches (100-mm)
- G. Frames: Provide commercial grade wood frames. Fabricate wood framing system as indicated, without sharp edges or corners.
  - 1. Construct framing of solid hardwood.

2. Fasten uprights with glue and screws.
  3. Reinforce uprights with corner blocks.
  4. Place uprights on approximate 24-inch (610-mm) centerlines. Double uprights on curves and at section joints.
  5. Incorporate integral kick base into framing.
- H. Backs: Fabricate backs from 2-1/2 inch (64-mm) medium density foam over plywood/MDF backing.
- A. Seats: Fabricate seats from minimum 2" high-density foam over plywood bottom panels with vent holes, consistent of 1 inch (25-mm) Dacron wrapped high density foam.
- B.
1. Install 2 inches (50-mm) of high-density foam over the entire seat and anchor to frame to prevent shifting.
  2. Cover foam with a layer of Dacron.
- C. Outlets: Provide electrical/date outlets in base as indicated on plan.

## MATERIALS

- A. Fabrics: As scheduled and in conformance with Architects control samples.
- B. Core: **[High Density foam] [Medium Density foam]** High resilient (HR), fire resistant (FR) foam, conforming to flammability requirements: Provide 1.8 density 29-pound ILD foam with Dacron wrap.
- C. Support: Provide 12-gauge zig sag springs, webbing, or none.
- D. Lumber: Graded in accordance with American Lumbar Standards Committee Board of Review Grading Rules; Construction Grade, any hardwood species.
1. Provide dressed lumber, surfaced four sides (S4S), unless otherwise indicated.
  2. Provide dry lumber with 19 percent maximum moisture content at time of dressing for 2-inch (50mm) nominal thickness or less, unless otherwise indicated.
- E. Plywood: C-D plugged, interior type plywood with exterior glue, fire retardant treated.
- F. Wood particleboard: CS236, Type 2, highly moisture resistant, 45-pcf density 3/4 inch (19mm) thick unless otherwise shown. WIC approved for plastic laminate; sanded faces; fire retardant treated.
- G. Composite Wood Products: Products shall be made without urea formaldehyde.



## UPHOLSTERING

- A. Banquette cushions shall be sewn to shapes indicated, in manner consistent with high use commercial applications.
- B. Square fabric warp and filling (woof, weft) threads and trim to appropriate size prior to cutting patterns.
- C. Apply upholstery material to form tailored seats, backs and ends.
- D. Cushions shall be uniform in width based on each banquette width.
- E. Sewing shall be on a straight line.
- F. Use exposed fastening devices or nails only as approved by Architect. Arrange neatly.
- G. Complete fabrication, including assembly and finishing to maximum extent possible, prior to shipment to project site. Disassemble components only as necessary for shipment and installation. Where necessary for fitting at site, provide ample allowance for scribing, trimming, and fitting.

## EXECUTION

### A. PREPERATION

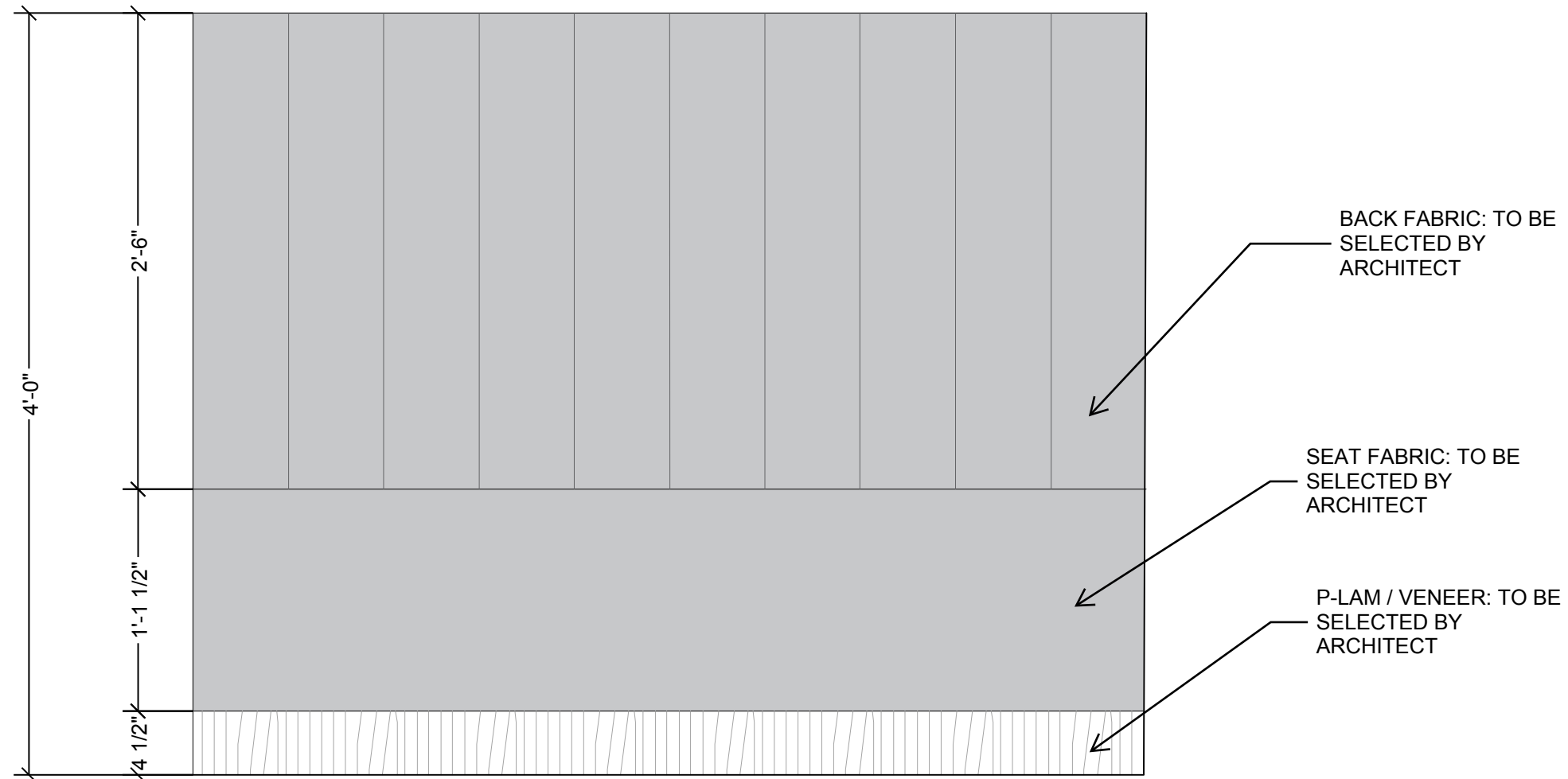
- 1. Before installing banquettes, examine shop fabricated work for completion and complete work as required.

### B. INSTALLATION

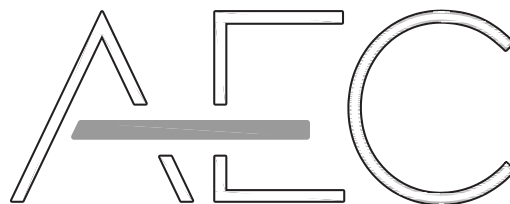
- 1. Install banquettes level, plumb, true, and straight with no distortions. Shim as required with concealed shims. Install level and plumb to tolerance of 1/8 inch in 96 inches (3-mm in 2400-mm). Install with no more than 1/16 inch in 96 inch (3-mm in 2400-mm) horizontal variation from a true plane.
- 2. Anchor banquettes to supporting substrate with concealed slips and splined connection strips. Do not use face fastening unless otherwise indicated.

### C. CLEANING AND PROTECTION

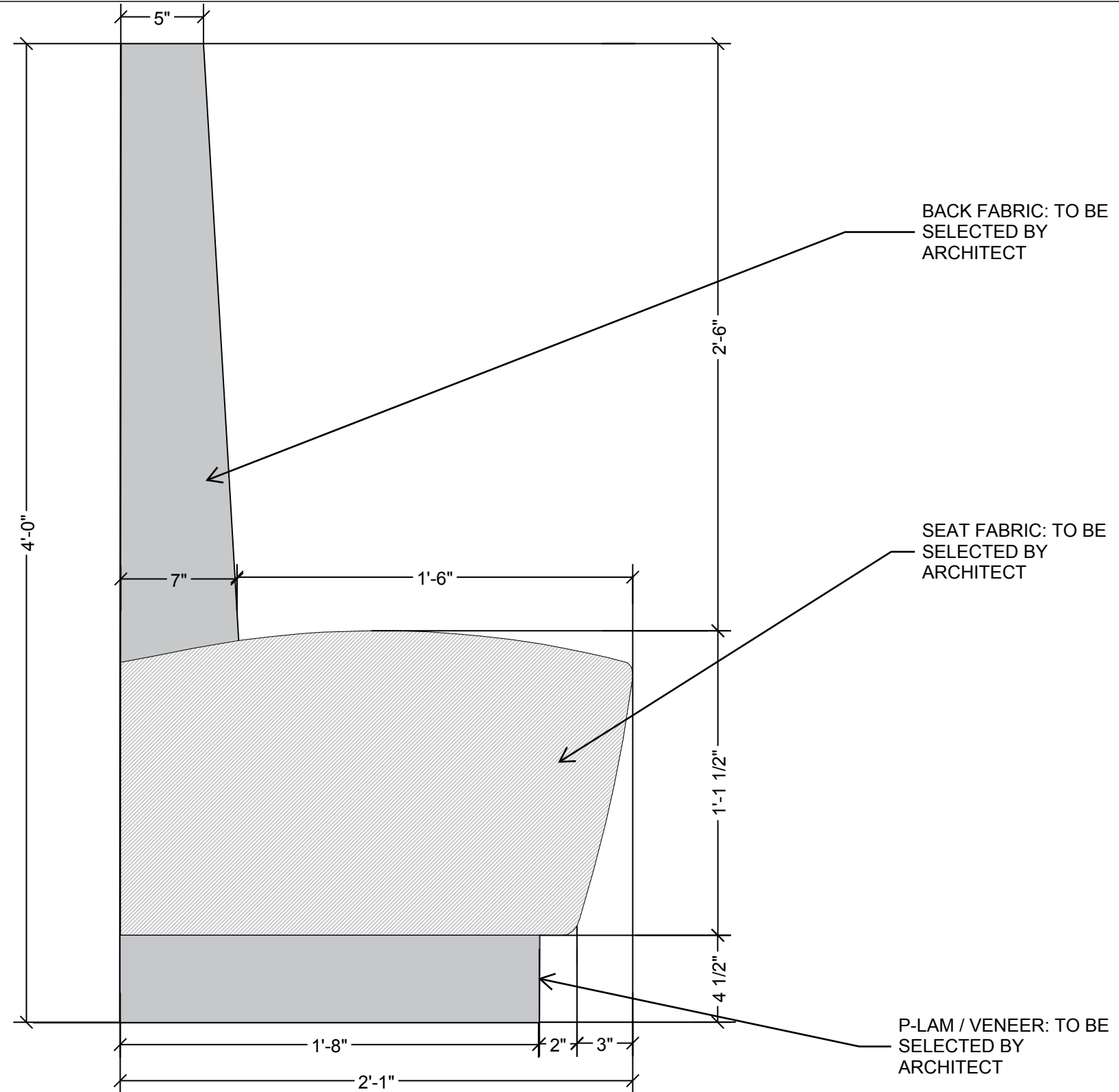
- 1. Repair damaged and defective banquettes, where possible, to eliminate functional and visual defects. Where not possible to repair, replace banquettes. Adjust for uniform appearance.
- 2. Clean banquettes on exposed surfaces. Touch up shop applied finishes to restore damaged or soiled areas.
- 3. Protect Banquettes from soiling or damage until Substantial Completion.



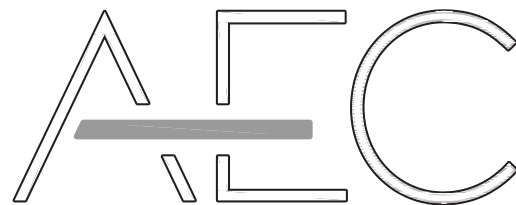
ELEVATION



**Banquette - Vertical Channels**



1 DETAIL



## Banquette - Vertical Channels

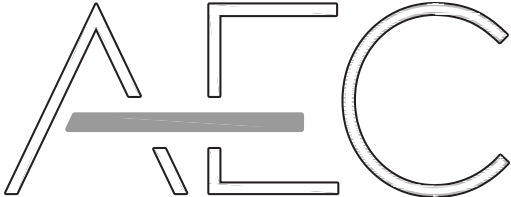
BACK FABRIC: TO BE  
SELECTED BY  
ARCHITECT

SEAT FABRIC: TO BE  
SELECTED BY  
ARCHITECT

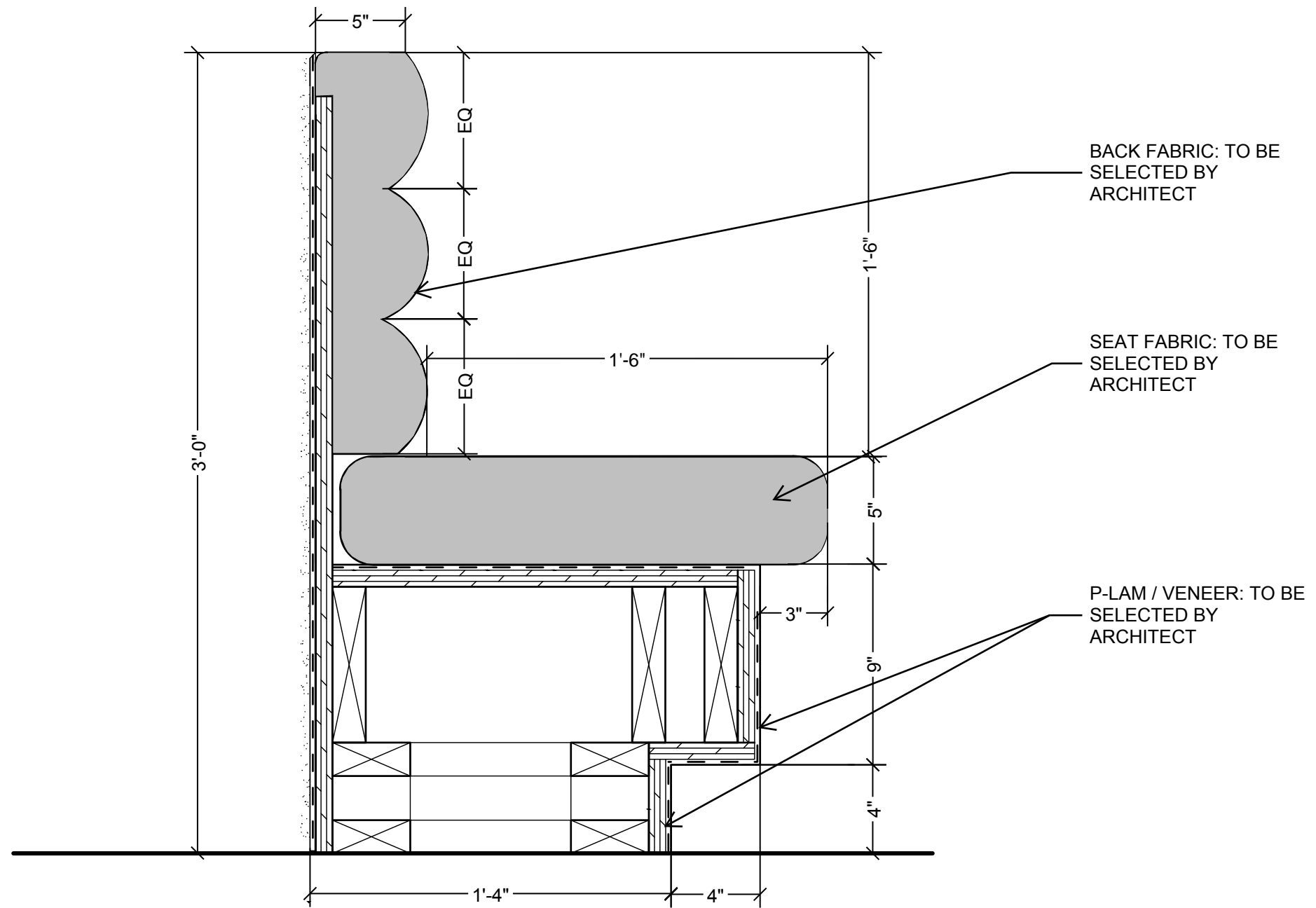
P-LAM / VENEER: TO BE  
SELECTED BY  
ARCHITECT

(5) EQ BREAKS

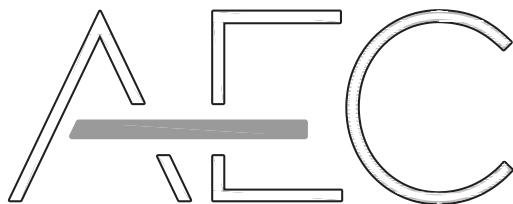
ELEVATION



Banquette - Horizontal Channels



DETAIL



**Banquette - Horizontal Channels**

